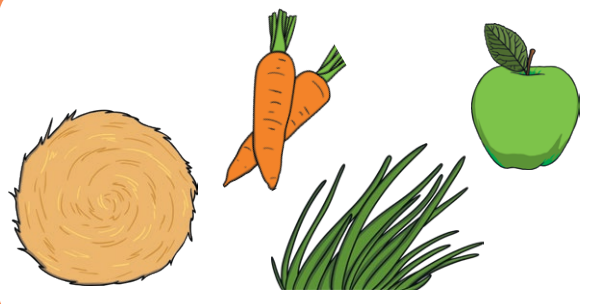
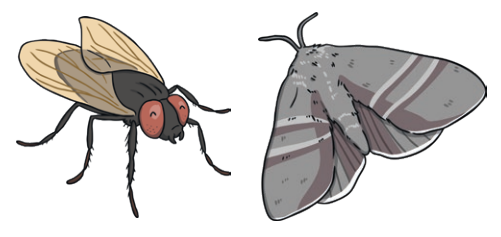




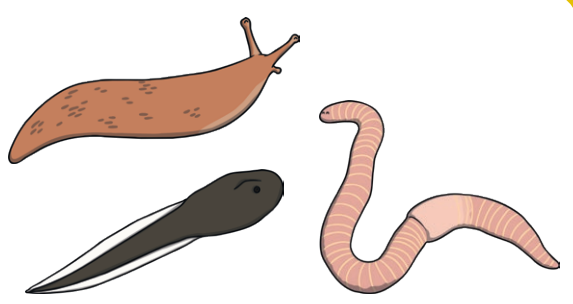
horse



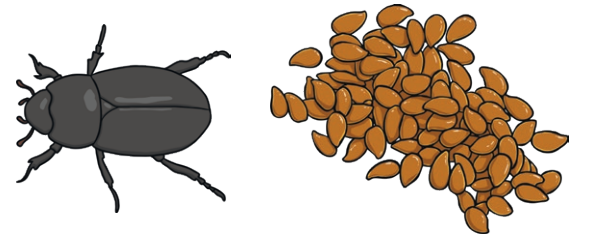
frog



newt



house sparrow

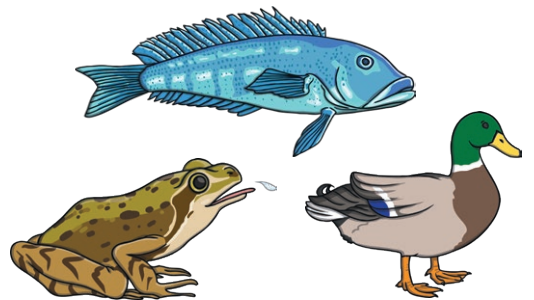




koi



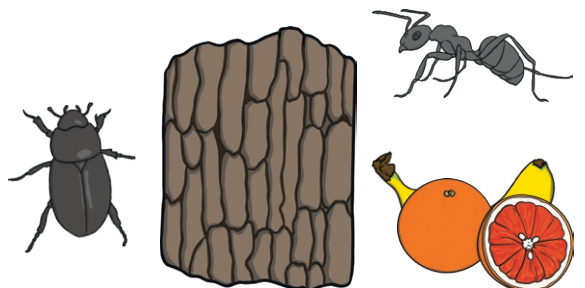
crocodile



snake

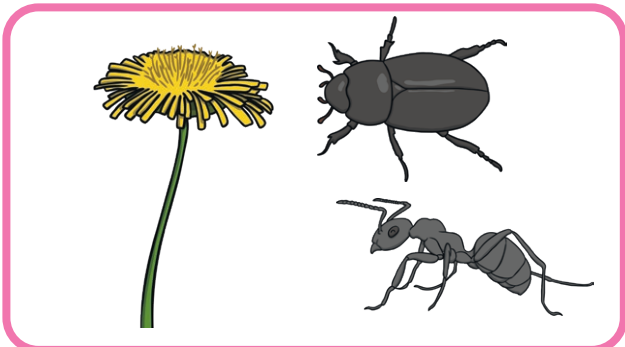


chimpanzee





**swan**



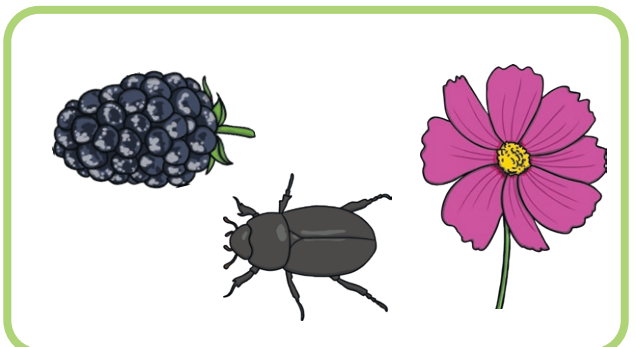
**cat**



**blue tang**

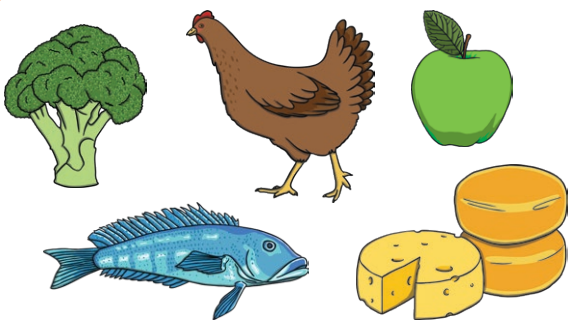


**bearded dragon**





human



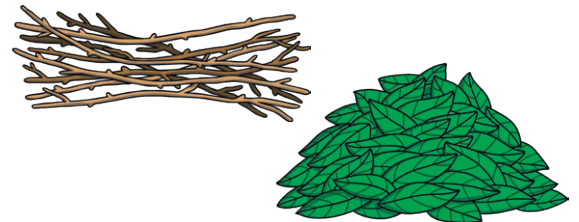
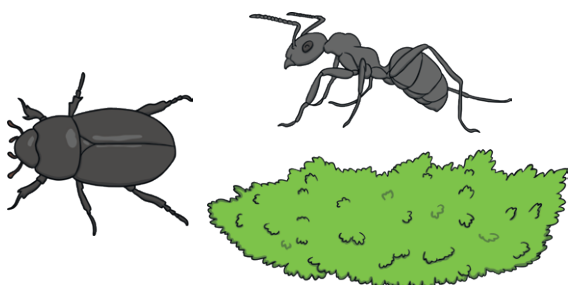
barn owl



ostrich

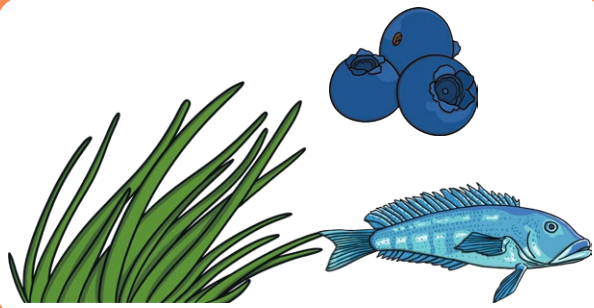


giraffe





**brown bear**



**tortoise**



# What Do Animals Eat?

Animals can be sorted by the types of food they eat. All animals are herbivores, carnivores or omnivores.

53

54

# Carnivores

Carnivores are animals which eat other animals.

Here are some examples of carnivores:



Lions eat other animals, such as young elephants, giraffes and antelope.



Frogs eat insects like flies and moths.



Tuna eat other fish, such as mackerel.



Barn owls eat mice, shrews, voles and sometimes even frogs.



Snakes, like the adder, eat small animals like mice, voles, frogs and newts.



# Herbivores

Herbivores eat plants, seeds and nuts.

Here are some examples of herbivores:

Giraffes eat leaves and twigs.



Cows eat grass.



Blue tangs eat algae.



Greenfinches eat seeds.

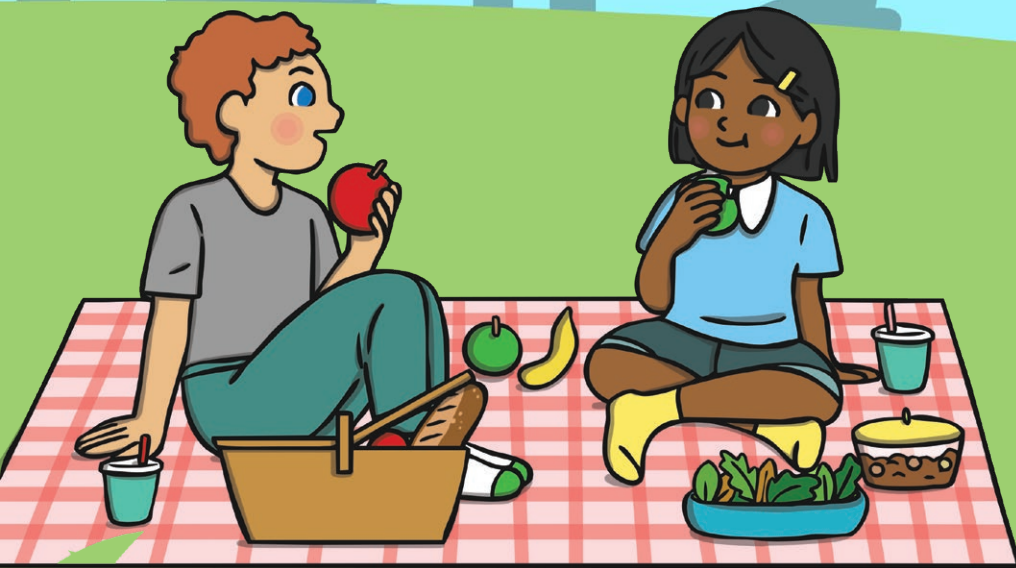


Can you think of any other animals that only eat plants?



# Omnivores

Omnivores eat meat and plants. Humans are omnivores but some humans choose to become **vegetarian** or **vegan** and not eat meat.



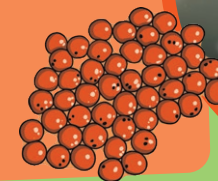
Some birds, such as robins, eat plants and meat.



Some mammals, such as mice and hedgehogs, eat seeds, plants and meat.



Some fish, such as goldfish, eat aquatic plants, as well as insects, larvae and fish eggs.



# Animal Diets Sorting

To identify, name and sort animals that are herbivores, carnivores and omnivores.



Use the **Animal Fact Cards** to find out what each animal eats.

Carnivores	Herbivores	Omnivores

horse	frog	newt	house sparrow
koi	crocodile	snake	chimpanzee
swan	cat	blue tang	human
bearded dragon	barn owl	ostrich	giraffe
brown bear	tortoise		

# Animal Diets Sorting **Answers**

Use the **Animal Fact Cards** to find out what each animal eats.

<b>Carnivores</b>	<b>Herbivores</b>	<b>Omnivores</b>
<b>frog</b>	<b>horse</b>	<b>koi</b>
<b>newt</b>	<b>blue tang</b>	<b>chimpanzee</b>
<b>crocodile</b>	<b>giraffe</b>	<b>swan</b>
<b>snake</b>	<b>tortoise</b>	<b>bearded dragon</b>
<b>cat</b>		<b>human</b>
<b>Barn owl</b>		<b>ostrich</b>
		<b>brown bear</b>
		<b>house sparrow</b>

# Animal Diets Sorting

To identify, name and sort animals that are herbivores, carnivores and omnivores.



Use the **Animal Fact Files** and **Animals All Around eBook** to find out what each animal eats.

Carnivores	Herbivores	Omnivores

horse	frog	newt	house sparrow
koi	crocodile	snake	chimpanzee
swan	cat	blue tang	human
bearded dragon	barn owl	ostrich	giraffe
brown bear	tortoise		

Write about how the animals' diets are the same and different.

### Carnivores

Same	Different

### Herbivores

Same	Different

### Omnivores

Same	Different

# Animal Diets Sorting Answers

Use the **Animal Fact Files** and **Animals All Around eBook** to find out what each animal eats.

<b>Carnivores</b>	<b>Herbivores</b>	<b>Omnivores</b>
<b>frog</b>	<b>horse</b>	<b>koi</b>
<b>newt</b>	<b>blue tang</b>	<b>chimpanzee</b>
<b>crocodile</b>	<b>giraffe</b>	<b>swan</b>
<b>snake</b>	<b>tortoise</b>	<b>bearded dragon</b>
<b>cat</b>		<b>human</b>
<b>Barn owl</b>		<b>ostrich</b>
		<b>brown bear</b>
		<b>house sparrow</b>

Answers may vary.

## Carnivores

<b>Same</b>	<b>Different</b>
<b>Example: Cats, barn owls and snakes each eat mice and voles.</b>	<b>Example: Even though they both eat some of the same animals, cats have teeth but barn owls have beaks.</b>

## Herbivores

<b>Same</b>	<b>Different</b>
<b>Example: Horses and giraffes are both mammals and both eat grass.</b>	<b>Example: Blue tang are fish and eat water plants but all the other animals eat plants found on land.</b>

**Omnivores**

<b>Same</b>	<b>Different</b>
<b>Example: Chimpanzees, ostriches and bearded dragons all eat insects.</b>	<b>Example: Even though they all eat insects, chimpanzees, ostriches and bearded dragons all belong to different animal groups (mammals, birds and reptiles).</b>



**horse**

**Features:** covered in hair, four legs

**Diet:** grass, hay, fruit and vegetables



**frog**

**Features:** moist, smooth skin, a long sticky tongue

**Diet:** insects, such as moths and flies



**newt**

**Features:** moist skin, four legs

**Diet:** slugs, worms, tadpoles



**house sparrow**

**Features:** feathers, two legs, a beak

**Diet:** seeds and insects





## koi

**Features:** scaly skin, fins and gills

**Diet:** water plants and insects



## crocodile

**Features:** scaly skin, sharp teeth

**Diet:** fish, frogs and birds



## snake

**Features:** scaly skin, no legs

**Diet:** mice, voles, frogs and other small animals



## chimpanzee

**Features:** covered in hair, two legs

**Diet:** mice, fruit, vegetables, bark and insects



**swan**

**Features:** feathers, two legs, a beak

**Diet:** plants, flowers, insects



**cat**

**Features:** covered in hair, four legs, sharp claws

**Diet:** mice, voles, birds and other small animals



**blue tang**

**Features:** gills, scaly skin, fins, live in water

**Diet:** water plants, such as algae



**bearded dragon**

**Features:** scaly skin, four legs

**Diet:** fruit, plants and insects



## human

**Features:** hair, two legs

**Diet:** fruit, vegetables, dairy, meat, grain and nuts



## barn owl

**Features:** feathers, two legs, a beak, sharp talons (claws)

**Diet:** mice, voles, shrews, frogs



## ostrich

**Features:** feathers, a beak, two legs

**Diet:** plants and insects



## giraffe

**Features:** covered in hair, four legs

**Diet:** grass, leaves, twigs and plants



## brown bear

**Features:** covered in hair, four legs, sharp claws

**Diet:** grass, plants, berries and insects

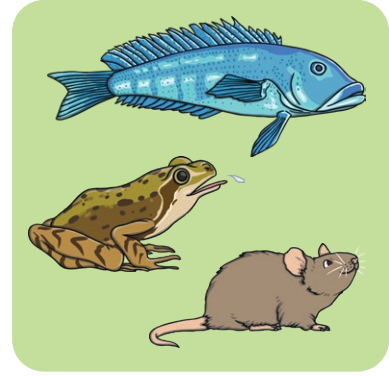


## tortoise

**Features:** scaly skin, four legs

**Diet:** grass, leaves and plants

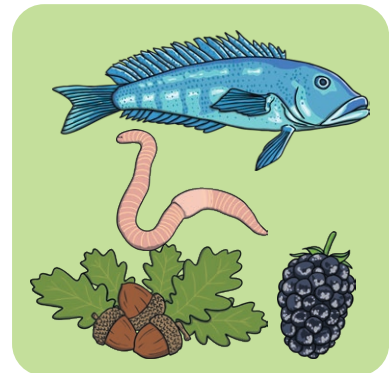
# Carnivores



# Herbivores



# Omnivores



**Key Vocabulary**

**amphibians**

**birds**

**fish**

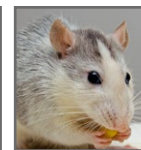
**mammals**

**reptiles**

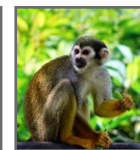
**mammals**



cow



mouse



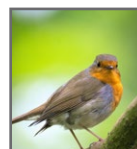
monkey



rabbit



**birds**



robin



penguin



chicken



**amphibians**



toad



**reptiles**



snake



chameleon



**fish**



goldfish



tuna



\_\_\_\_\_ have a beak, two legs, feathers and wings.

\_\_\_\_\_ live in water. They have scaly skin, fins to help them swim and breathe through gills.

\_\_\_\_\_ are animals that breathe air, grow hair or fur and feed on their mother's milk as a baby.

\_\_\_\_\_ breathe air. They have scales on their skin.

\_\_\_\_\_ live in water as babies and on land as they grow older. They have smooth, slimy skin.

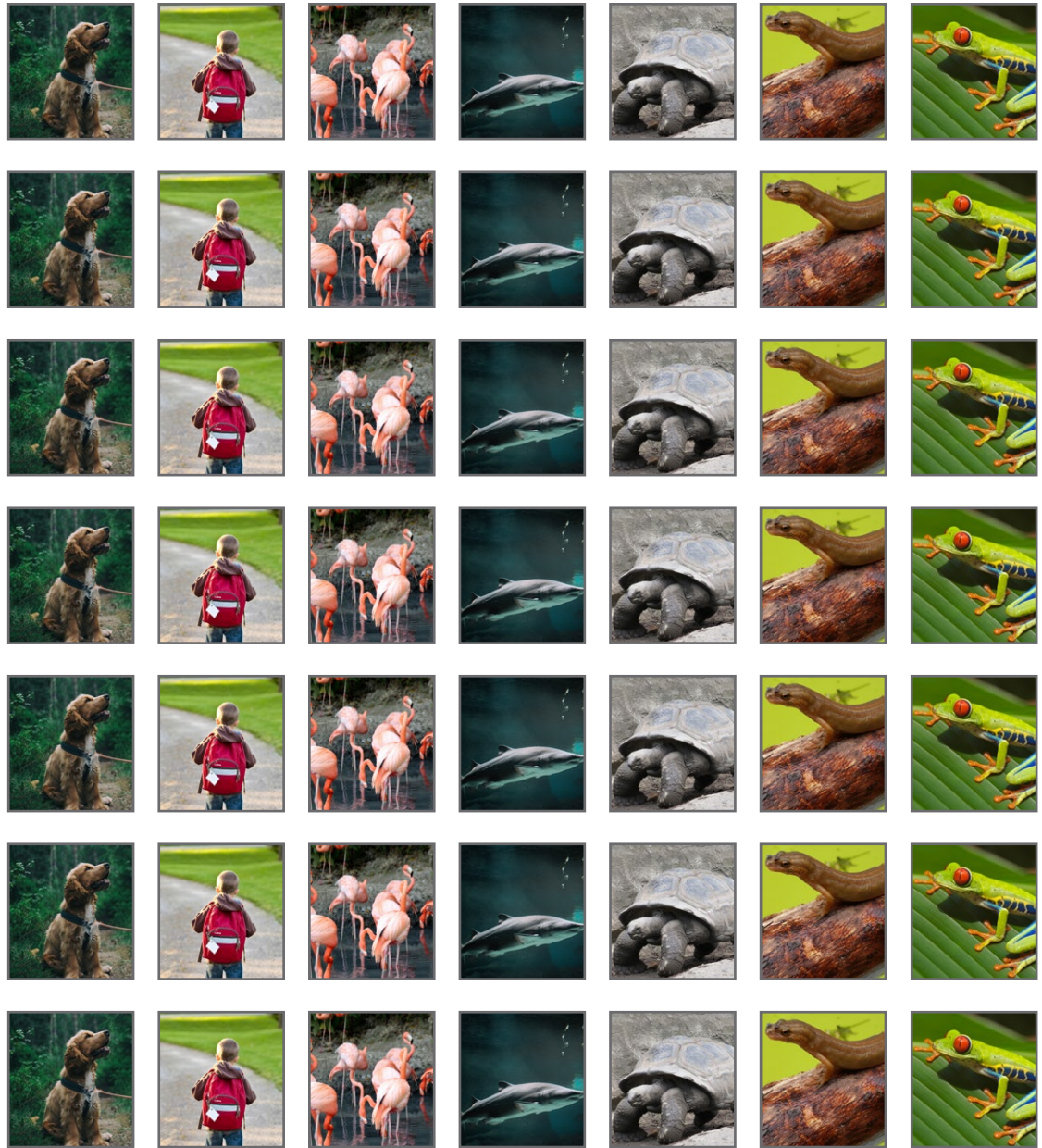
\_\_\_\_\_ have a beak, two legs, feathers and wings.

\_\_\_\_\_ live in water. They have scaly skin, fins to help them swim and breathe through gills.

\_\_\_\_\_ are animals that breathe air, grow hair or fur and feed on their mother's milk as a baby.

\_\_\_\_\_ breathe air. They have scales on their skin.

\_\_\_\_\_ live in water as babies and on land as they grow older. They have smooth, slimy skin.





## Reasoning Cards



Look at the animal.

Discuss what type of diet it has.

What food would this animal eat?

What types of food do carnivores eat?

What types of food do herbivores eat?

What types of food do omnivores eat?

## Reasoning Cards



Look at the animal.

Discuss what type of diet it has.

What food would this animal eat?

What types of food do carnivores eat?

What types of food do herbivores eat?

What types of food do omnivores eat?

**Reasoning Card ③**

What type of food do carnivores eat?

**Animals that mostly eat other animals (meat) are carnivores.**

What type of food do herbivores eat?

**Animals that only eat plants are herbivores.**

What type of food do omnivores eat?

**Animals that eat both plants and other animals are omnivores.**

What type of food would this animal eat?

**The animal given is a bear (specifically a black bear as found in North America). Black bears are omnivores. Their diet includes grasses, roots, berries, insects and fish. They can also kill young moose and deer. Children may know that black bears will use our rubbish as a food source. They may also give honey as an answer which is correct and not a misconception.**